

**Upholstery collection**  
Alfredo Häberli



**kvadrat**

## Alfredo Häberli upholstery collection

Acclaimed designer Alfredo Häberli has created a collection of upholstery fabrics for Kvadrat, made from Trevira CS featuring three innovative designs, which stand out for their elegance and vibrant colours: *Highfield 2*, *Greenfield* and *Plot*.

The sophisticated colour palettes of the collection share many colours, several of which reveal intriguing nuances when given a second look. They are composed of a combination of subtle, natural shades, such as beige, and highlight hues, such as China red. All the colours for the fabrics are created by combining two different tones, with the exception of the red and black colour settings. Alfredo Häberli: *'It was the aim to make fabrics using two different coloured yarns. This method creates 'new' colours with very different and appealing characters.'*

The designs also share other characteristics. For instance, *Highfield 2* and *Greenfield* feature intriguing organic patterns, which reveal subtle details and hidden depths as the viewer gets closer. Furthermore, the top layer of both designs is made from *Plot*. As a result, all three fabrics can easily be combined to eye-catching effect.

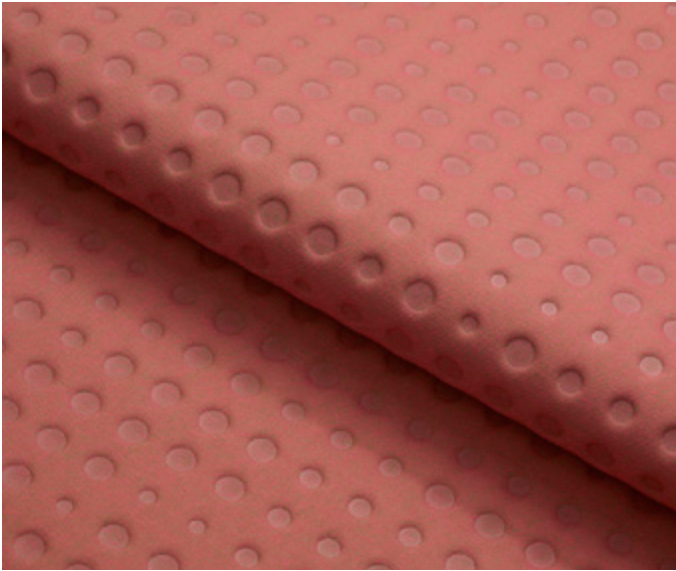
However, whilst the designs have a number of attributes in common, and complement each other well, each has an unmistakably individual expression. All are suitable for both residential and contract usage.

Images can be downloaded at  
[www.kvadrat.dk/company/press\\_room](http://www.kvadrat.dk/company/press_room)

For further information  
[www.kvadrat.dk](http://www.kvadrat.dk)



I&I Fotografie, Zürich



### **Highfield 2**

100% Trevira CS  
140 cm wide  
18 colours

*Highfield 2* is an update of *Highfield*, which comes in new colours, such as vibrant pink and graceful camel. A soft and comfortable upholstery fabric with a sports-inspired look, it consists of two layers of material with an intermediary layer of foam material.

The design features an organic heat printed pattern of differently sized circles embossed in the surface of the textile. Inspired by Alfredo Häberli's metal bench design 'Los Bancos Suizos', this gives the fabric an innovative look and a three-dimensional, tactile feel.

Alfredo Häberli: 'My idea for *Highfield 2* was to achieve a three-dimensional, soft surface. The irregular circles in the material add sparkle to the surface and the pattern suits furniture well with its combination of square and organic forms'.



### **Greenfield**

100% Trevira CS  
140 cm wide  
18 colours

Constructed using the same technique as *Highfield 2*, innovative *Greenfield* features a dynamic and irregular pattern across its surface. Soft and comfortable, it has a three-dimensional, tactile and sparkling expression.

*Greenfield* offers a very individual pattern, inspired by the interaction of fields and landscapes: a variety of small organic shapes, made from fine curved and straight lines, which play across the surface of the fabric.

The design of *Greenfield* suits furniture well and is very easy to work with. This is because the lines of the shapes in the pattern have been designed to travel in all directions, which greatly simplifies the process of cutting and sewing the fabric.



### **Plot**

100% Trevira CS  
140 cm wide  
33 colours

Woven in a plain weave, *Plot* combines a simple, elegant expression with rich, intriguing colours. It is the same fabric that forms the top layer of *Highfield 2* and *Greenfield*.

The extensive palette for *Plot* contains all the colours for *Greenfield* and *Highfield 2*. It also offers a number of similar nuances, which go very well with the colours shared with the other designs in the collection.