

Knit collection 2014  
Alfredo Häberli

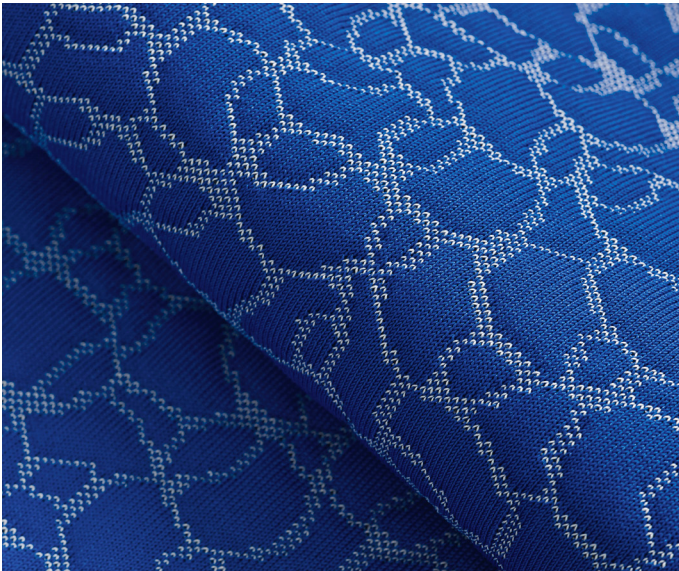
**kvadrat**





### **Nebula**

70% polyester, 17% wool, 13% polyester FR  
10 colourways  
170 cm wide



### **Nadir**

100% polyester FR  
9 colourways  
170 cm wide

## **Knit collection 2014**

The Alfredo Häberli knit collection comprises three vibrant yet refined knitted upholstery textiles. *Nebula*, *Nadir* and *Galaxy*.

Though they are constructed using different knitting techniques – and therefore each design has a distinctively individual expression – they all share an intriguing character, which provokes a strong sense of curiosity in the viewer.

Thanks to their knitted construction, *Nebula*, *Nadir* and *Galaxy* offer good stretchability, which makes them ideal for organically shaped furniture.

The colourways for *Nebula*, *Nadir* and *Galaxy* combine contrasting and tone-on-tone hues, which range from bright to earthy. Though their respective colourways are distinct from each other, they are linked by the colours of one or more yarns. Consequently, *Nebula*, *Nadir* and *Galaxy* work particularly well together.

Alfredo Häberli: *'All the designs are very different but are nevertheless interrelated due to their specific colouring. The colour design of this collection was extremely fun!'*

### **Nebula**

Based on a floral Japanese picture, which is transformed into a pixelated raster using the knitting technique, three-dimensional *Nebula* features a pattern of organic, abstract shapes.

The lines in the pattern are in a contrasting hue or tone-on-tone with the base colour, and emerge from the fabric to eye-catching effect when it is seen from close up. Intriguingly, depending on the colourway, the textile can appear to bulge in or out.

During *Nebula*'s construction, thick polyester yarns are inserted between its back and front layer, which is made from a blend of polyester and wool for extra comfort.

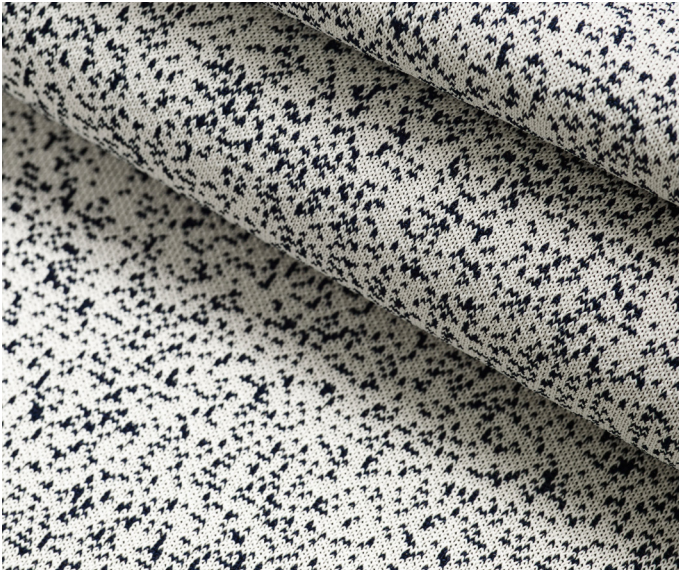
*Nebula* is suitable for soft seating. It works particularly well on large surfaces and lounge furniture.

### **Nadir**

*Nadir* is thick and tactile, as it is also constructed with thick polyester yarns between its front and back layers. Its pattern is based on interlinking and overlapping rings in different sizes, which build an irregular, directionless pattern.

Though *Nadir* is knitted, its pattern appears to be stitched or embossed, depending on the specific colourway.

The front layer of *Nadir* is made of unicoloured polyester FR for added flammability resistance. Consequently, it is suitable for a wide range of contract applications, and is particularly well-suited to soft contract use.



### **Galaxy**

100% polyester FR  
12 colourways  
175 cm wide

### **Galaxy**

*Galaxy* features an irregular but refined pattern of small dots, which contrast with a unicoloured, light or dark background. This recalls the clusters of stars that make up galaxies.

The colours for *Galaxy* include neon, bold hues and natural shades. In some colourways the contrast between the 'stars' and the background shade is strong; in others it is more subtle. Alfredo Häberli: *'The colour combination gives the textile a very different appearance.'*

Made from polyester FR, *Galaxy* combines flammability resistance with good durability. Accordingly, it is ideal for contract applications, particularly for offices.

### **Alfredo Häberli**

The varied portfolio of Argentine-Swiss designer Alfredo Häberli includes industrially produced everyday articles, architectural projects and technically sophisticated furniture. His designs particularly stand out for their simplicity and innovative, intuitive use of colours.

A guest lecturer at schools of design and architecture in the US and Europe, Alfredo Häberli has worked with many top design firms. These include Vitra, Moroso, Camper, Luceplan, Thonet and Zanotta. His work has been extensively exhibited.

For further information, please contact [press@kvadrat.org](mailto:press@kvadrat.org)

[www.kvadrat.dk](http://www.kvadrat.dk)