

We have been manufacturing hydraulic floor tiles and terrazzo items since 1933, forming part of a Mallorcan tradition arising at the end of the 19th century where numerous small factories locally produced these pieces, which were to become particularly popular among architects of the time.

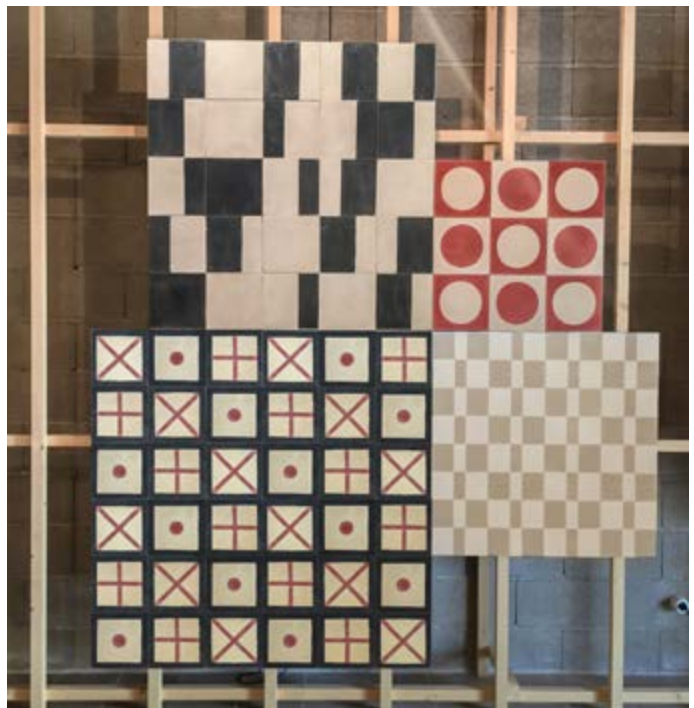
Nowadays we are single-mindedly committed to craftsmanship and to the quality of our products, using creativity as a distinguishing factor while also ensuring that the industry stays true to its values. The pieces stand out because of their natural finish, their sense of craftwork, the clever ageing, and the nobility and elegance of the materials used.

We work hand-in-hand with architects and designers such as Herzog & De Meuron, Sybilla, Alberto Lievore, Carme Pinós, Barozzi Veiga, Elías Torres, Lluís Clotet, Alfredo Häberli, David Chipperfield and Jørn Utzon, among others because we have been, for the last 20 years, focused on design and innovation to create a traditional but state-of-the-art product.





1



3



2

1. Traditional patterns, in our showroom.
2. Carme Pinós collection, in our showroom. FAD award in 2016.
3. Sybilla collection, in our showroom.



Forum collection,
by Herzog & de Meuron

Bespoke tiles and washbasins.
Szczecin Philharmonic Hall by Barozzi
Veiga (2015 Mies Van der Rohe
award)





Sybilla collection tiles.
MM House, by OHLAB
(2016 WAF award).

1. Bespoke encaustic tiles, by Soho House
2. 50x50x2cm cement tiles. Can Kaki, by Luis Galliussi
3. 25x25x1.7cm bespoke tiles, by Carles Oliver.



2



1



3



1



2



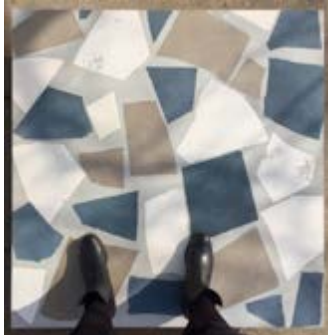
9



10



3



4



11



12



5



6



7



8

1. 50x50x2cm bespoke terrazzo, designed by Estudio Auna
2. 100x100x2cm bespoke encaustic tile, by Wingårdhs
3. 100x100x2cm terrazzo.
4. 100x100x2cm terrazzo.
5. 100x100x2cm terrazzo.
6. 100x100x2cm terrazzo.
7. 100x100x2cm bespoke terrazzo, by Lázaro Rosa-Violan
8. 100x100x2cm terrazzo.
9. 12.5x12.5x1.7cm bespoke encaustic tile, by TEd'A architects
10. 25x12.5x2cm bespoke encaustic tile and grouting, by TEd'A architects
11. 20x20x1.7cm bespoke encaustic tiles, by Soho House
12. 25x25x1.7cm encaustic tiles.



1

1. Bespoke cement washbasin, by More Design
2. Bespoke cement washbasin, by TEd'A architects
3. Bespoke cement washbasin, shower tray and tiles, by Flexo Arquitectura



2



3

1. 95x75x4cm bespoke plinths, by David Chipperfield Architects
2. Bespoke washing sink, by Estudio Herreros
3. Bespoke washbasin, by Herzog & de Meuron
4. Finishing Alfredo Haberli Collection.
5. Bespoke bathtub, by Tomás Alonso
6. Bespoke tiles, by TEd'A architects
7. Bespoke bar, by Soho House
8. Bespoke 25x12.5x1.7cm tiles, by Peter Bilak
9. Bespoke tiles, by SMS_arquitectos



2



3



4



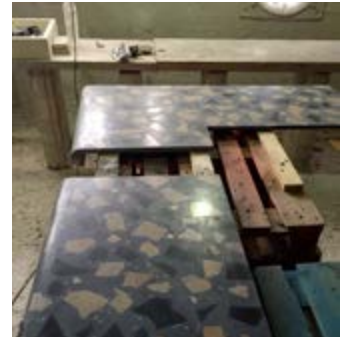
5



1



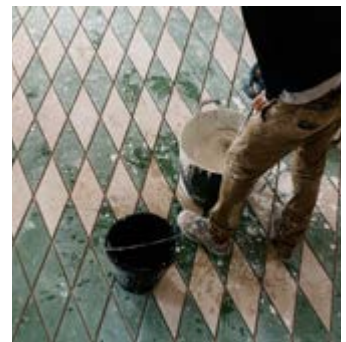
6



7



8



9

+ 34 971 65 06 09
info@huguetmallorca.com

Camí de Ciutat Vell
07630 Campos
Mallorca

www.huguetmallorca.com

instagram: @huguetmallorca

facebook: @huguetmallorca

twitter: @huguetMallorca

